

Parkheath

Sold on Service

Belsize Grove NW3
Asking Price £365,000



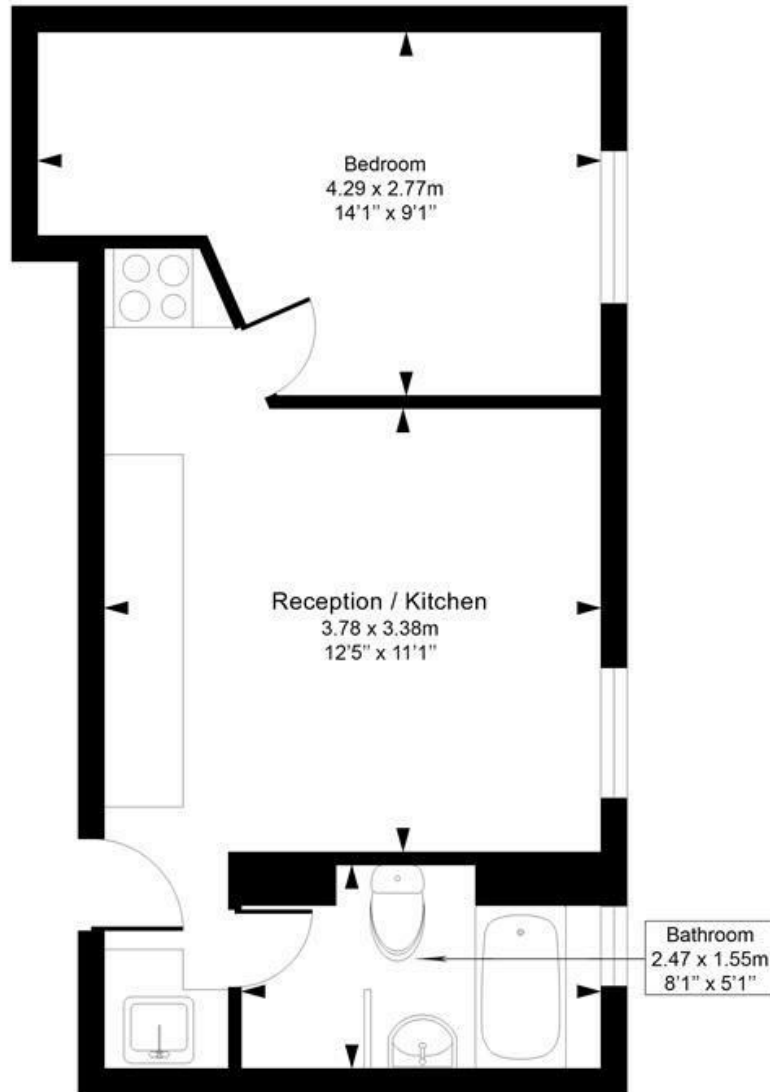
Fantastic, contemporary 1 bedroom apartment
Stylish open plan living area
Set in this popular purpose built block
Communal gardens, porter and lift
Dark wood flooring

14' bedroom with fitted wardrobes
Stone tiled bathroom
First floor 333 sq ft
Share of freehold
Moments from all Belsize Park amenities

Belsize Park Office 020 7431 3104

Holmefield Court

Approximate Gross Internal Area = 31 Sq m / 333 sq ft



First Floor

This plan is for layout guidance only. Drawn in accordance with RICS guidelines. Not drawn to scale unless stated. Windows & door openings are approximate. Whilst every care is taken in the preparation of this plan, please check all dimensions, shapes & compass bearings before marking any decisions reliant upon them.

ELLIE CLAIRE PHOTOGRAPHY LTD
www.ellieclairephotography.com

The particulars do not constitute part of an offer or contract. The particulars, including text, photographs and plans, are for the guidance only of prospective purchasers/tenants and must not be relied upon as statements of fact. The descriptions provided therein represent the opinion of the author and whilst given in good faith should not be construed as statements of fact. Nothing in these particulars shall be deemed a statement that the property is in good condition or otherwise or that any services or facilities are in good working order. All measurements are approximate